

Solution Conformance Certification Report

Business Process Framework (eTOM)
&
Information Framework (SID)

For:

Jio Platforms Limited

JIO B2C System – ODA-C-TMFC010 v1.3.0
Jio Product Catalog (JPC) - Jio Connect(X)

May 2025

Table of Contents

1	Introduction.....	3
1.1	Executive Summary	3
2	Solution Overview	4
2.1	About JIO	4
2.2	Solution Functionality / Capability	5
2.2.1	Key Features:	5
2.2.2	Architecture.....	6
2.3	JIO B2C – Jio Product Catalog (JPC) - Jio Connect(X) – Benefits	8
2.4	Information Framework Assessment - ABE Scope	10
3	Business Process Framework Assessment Overview	11
3.1	Mapping Technique Employed.....	11
3.2	Scope of Conformance Certification (eTOM)	12
3.3	Scope of Conformance Certification – Graph (eTOM)	13
3.4	Business Process Framework – Scoring Guidelines.....	14
3.5	Business Process Framework – Process Mapping Descriptions	15
3.5.1	Mapping Details & Supporting Evidence	15
3.6	Conformance Results – Chart (eTOM).....	15
3.7	Conformance Results – Graph (eTOM)	16
4	Information Framework Assessment Overview	17
4.1	Mapping Technique Employed.....	17
4.2	Scope of Conformance Certification (SID).....	17
4.3	Detailed Conformance Mapping Summary (SID)	18
4.4	Information Framework Conformance Result.....	19
4.4.1	Information Framework – Scoring Rules	20
4.4.2	Information Framework Adoption Conformance Scoring Methodology	20
4.4.3	Additional Notes on Information Framework Conformance Adoption scoring:.....	22

List of Figures

Figure 1 - JIO B2C -ODA-C-TMFC010 for Jio Product Catalog (JPC) - Jio Connect(X) Architecture ..	7
Figure 2 - Process coverage for JIO B2C System – ODA-C-TMFC010 for Jio Product Catalog (JPC) - Jio Connect(X) - Conformance Certification	9
Figure 3 - Level 1 & 2 ABEs - SID coverage for JIO B2C System – ODA-C-TMFC010 for Jio Product Catalog (JPC) - Jio Connect(X) Conformance Certification	10
Figure 4- JIO B2C System – ODA-C-TMFC010 for Jio Product Catalog (JPC) - Jio Connect(X) — Scope of certification	12
Figure 5- JIO B2C System – ODA-C-TMFC010 for Jio Product Catalog (JPC) - Jio Connect(X) — certified processes.....	13
Figure 6- TM Forum Business Process Framework: Conformance Scoring Rules	14
Figure 7- JIO B2C System for Jio Product Catalog (JPC) - Jio Connect(X) — certified processes – Product domain.....	15
Figure 8- JIO B2C – ODA-C-TMFC010 - System for Jio Product Catalog (JPC) - Jio Connect(X) — Scores Awarded	16
Figure 9 - SID - v24.0 – JIO B2C – ODA-C-TMFC010 - System for Jio Product Catalog (JPC) - Jio Connect(X) SID Certification Scope	17
Figure 10 - SID - v24.0 – JIO B2C System – ODA-C-TMFC010 - for Jio Product Catalog (JPC) - Jio Connect(X) SID Conformance Mapping	18
Figure 11 - SID - v24.0 – JIO B2C System – ODA-C-TMFC010 for Jio Product Catalog (JPC) - Jio Connect(X) SID Certification Scores	19
Figure 12 - TM Forum Information Framework Adoption Conformance - Scoring Rules	21

1 Introduction

1.1 Executive Summary

This document provides details of JIO B2C System – ODA-C-TMFC010 v1.3.0 Jio Product Catalog (JPC) - Jio Connect(X), against the following ODA Core Frameworks:

- Business Process Framework (eTOM) version 24.0
- Information Framework (SID) version 24.0

The assessment included a review of the methodology approach to process and information modeling, respectively against the TM Forum's Business Process Framework (eTOM) and the Information Framework (SID) according to the specific processes and entities submitted in scope for the Assessment.

For more information on JIO B2C System - ODA-C-TMFC010 for Jio Product Catalog (JPC) - Jio Connect(X), please contact:

Sudarshan Kumar
JPC Product Manager and Technical Architect
Email : Sudarshan.Kumar@ril.com

Sanjay Dubey
JPC Lead Developer
Email: Sanjay3.Dubey@ril.com

Ashish S Kumar
JPC BA and Solution Architect
Email : Ashish.S.Kumar@ril.com

Revanna Hadripura
JPC Delivery Head
Email: Revanna.Hadripura@ril.com

For any additional information on this ODA Conformance Certification Report, please contact TM Forum at: conformance@tmforum.org.

2 Solution Overview

2.1 About JIO

Reliance Jio has revolutionized the Indian telecom and digital services landscape, bringing affordable, high-speed connectivity to millions. Since its launch, Jio has been at the forefront of digital transformation, democratizing data access and fostering innovation across industries. With a customer-first approach, Jio's cutting-edge technologies, including 4G LTE, 5G, fiber broadband, and AI-driven solutions, empower businesses and individuals alike.

Jio's impact extends beyond connectivity, driving advancements in digital payments, cloud computing, and enterprise solutions. The company's Open Digital Architecture (ODA)-based platforms enable scalable and modular solutions, ensuring seamless integration across industries. Jio's AI-powered customer service and CRM solutions enhance customer experience while optimizing operational efficiency.

By embracing sustainability and digital inclusion, Jio supports India's vision of a self-reliant digital economy. Initiatives like rural broadband expansion, IoT-driven smart cities, and industry-focused automation highlight Jio's commitment to People, Profit, and Planet. Jio's innovation ecosystem fosters collaboration with startups and enterprises, accelerating the adoption of next-generation technologies.

Through continuous investment in digital infrastructure and disruptive technologies, Jio remains a driving force in India's digital revolution, enabling businesses, enhancing lives, and shaping the future of connectivity.

Jio has created an eco-system comprising of network, devices, applications and content, service experience and affordable tariffs for everyone to live the Jio Digital Life. Since launch of its commercial operations in 2016, it has been redefining benchmarks, setting new milestones, inspiring unprecedented adoption, usage, and service metrics that are among the best in the industry.

For more information on our products and services, visit our website at: www.jio.com

2.2 Solution Functionality / Capability

As a part of complete solution design, Data Architecting is required to identify information for implementing end to end solution design. Data Architecting involves designing Conceptual Data Model using business entities and designing Physical Data Model which involves mapping between business entities to system entities.

Conceptual Data Model & Physical Data Model are referred by Solution Architects, Application Architects and Data Architects. SID Aggregate Business entities are typical examples of Conceptual Data model. CDM is mostly represented using E-R models or UML models in some cases leveraging tools like JOSIF, ARIS, and RSA respectively.

It captures the Logical Data Model for **Jio Product Catalog (JPC) - Jio Connect(X)** to define and distribute product information in a structured and consistent way following the **TM Forum SID standards**.

For online queries into product catalog, our strategy is to keep a replica of the product catalog data into an in-memory database (EDIF). It provides an integration framework between **Jio Product Catalog (JPC) - Jio Connect(X)** and data consuming systems like EDIF, CRM, OCS, Billing & Invoicing, ERECHARGE, POS, Onboarding Channels, Selfcare Channels etc.

The concept of **Jio Product Catalog (JPC) - Jio Connect(X)** is to centralize multiple product catalogs across lines of businesses and applications into a unified enterprise catalog which makes it easier to create innovative, convergent offers, as well as to respond quickly to market demands. **Jio Product Catalog (JPC) - Jio Connect(X)** to be the unified product catalog for the Jio's businesses like **Mobility, Fiber, Air Fiber, IoT, Enterprise**.

2.2.1 Key Features:

Key Features of Jio Product Catalog (JPC) - Jio Connect(X):

- Intuitive interface to configure Products, Resources and Services.
- Designed with capability to maintain all Enterprise level Offers at single platform.
- Clone and launch new Product Offers from existing Product Offers.
- Supports effortless modification of existing Offers.
- Efficient and unified mechanism to push data to consumer applications in the ecosystem.
- RESTful APIs supporting CRUD operations.
- Seamless integration with new applications.
- TMForum OpenAPI certified for TMF 620, TMF 633, TMF 634, TMF 657, TMF 760, TMF 679.
- Reduced time to market.
- Reduced CAPEX and OPEX.

2.2.2 Architecture

Jio Product Catalog (JPC) - Jio Connect(X) is a platform where the logical data model for product catalog is defined as **Product Offering Model**. This model defines the product offerings in detail which will be made available to the customers along with the product, service and resource specifications associated with it. Further there are prices corresponding to simple and bundled product offering of the model.

Through the data model JPC- Jio Connect(X) has inbuilt capability to cover rule-based business requirements which are mainly compatibility rules, eligibility rules and dependency rules. The model has a provision to define products based on customer segments (silver, gold, platinum etc.), geographic locations, sales channels.

This model also defines allowable actions against each product specification like Suspend/Resume, Safe custody etc. This is defined using the BusinessInteractionType entity. Through this data model JPC- Jio Connect(X) defines all the business interactions which are possible against any product specification and considering the present status of the product instance for a customer.

The model exhaustively defines all the details which define a product to be offered by Jio to its customers in the market.

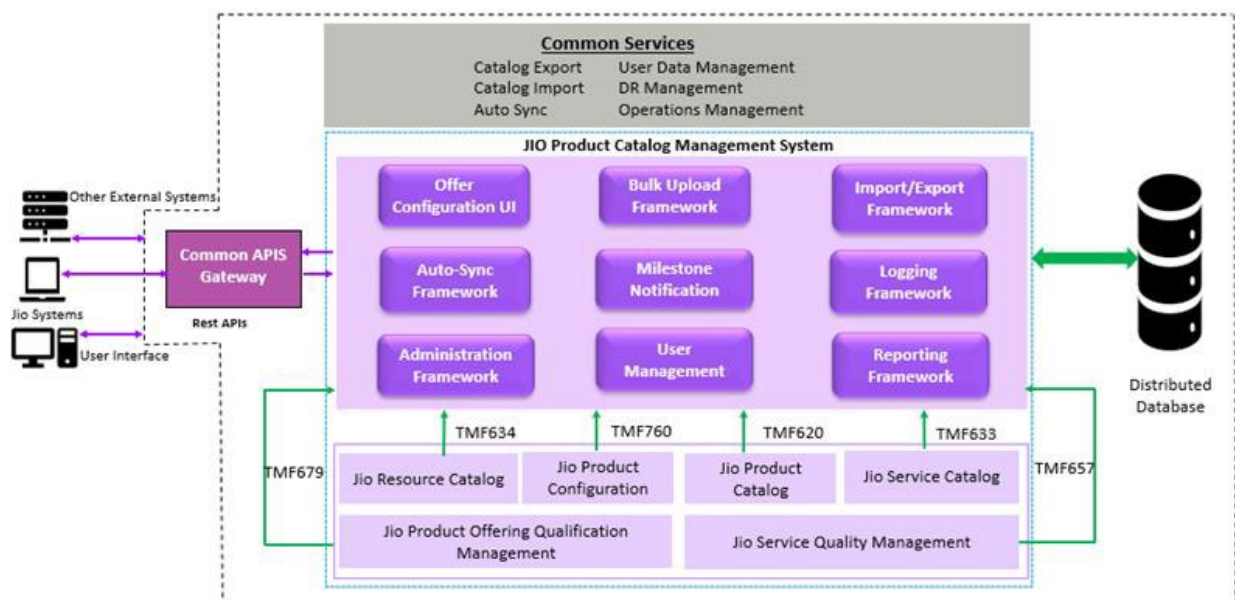
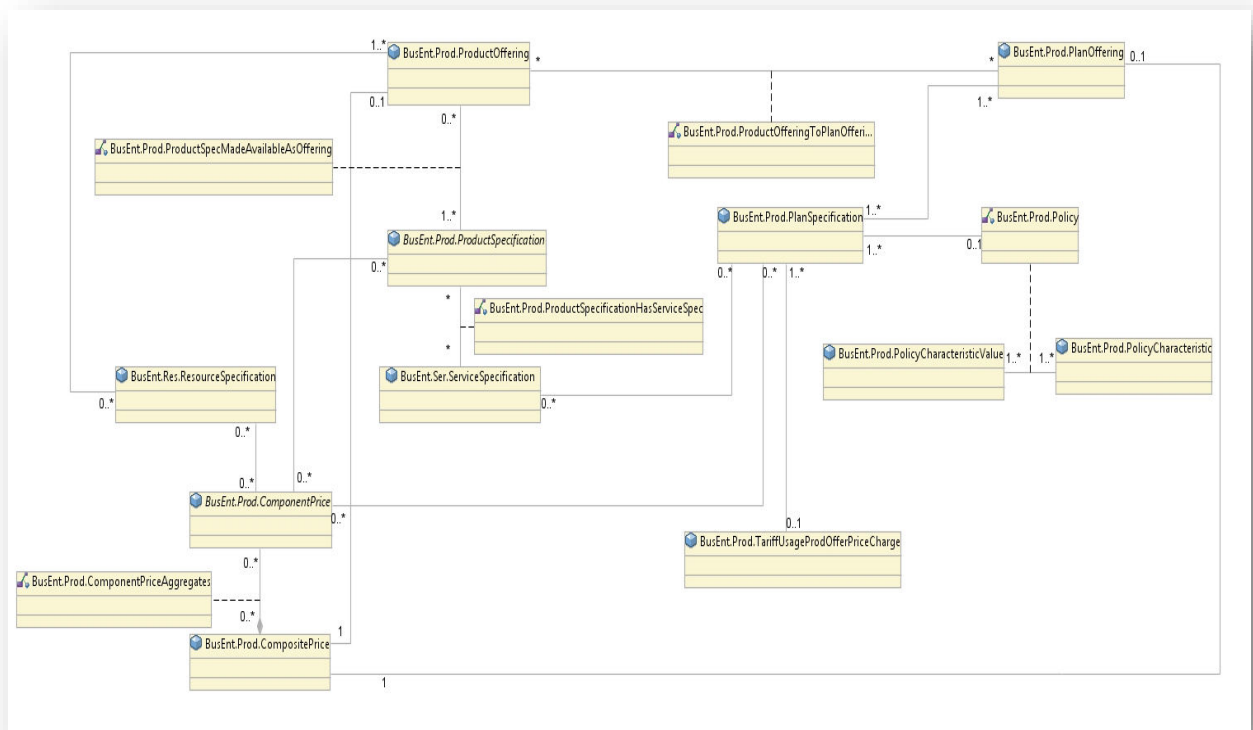


Figure 1 - JIO B2C -ODA-C-TMFC010 for Jio Product Catalog (JPC) - Jio Connect(X) Architecture

2.3 JIO B2C – Jio Product Catalog (JPC) - Jio Connect(X) – Benefits

Jio Product Catalog (JPC)- Jio Connect(X) solution provides structured information about products available for sale. It typically includes product details, pricing, availability, and relationships between different products.

Product Management

- Create, update, and delete product entries.
- Organize products into categories and subcategories.
- Manage product specifications and characteristics.
- Handle product bundles and relationships.

Pricing & Discount Management

- Define base prices, promotional prices, and discounts.
- Support multiple pricing models (one-time, subscription, tiered, pay as you go, rental etc.).
- Supports multi-currency-and regional pricing.

Product Offerings & Qualification

- Configure different product offerings based on customer eligibility.
- Define rules for product compatibility and dependencies.
- Support customized product configurations.

API & Integration Support

- Provide RESTful APIs for external applications (e.g., CRM, ERP).
- Integrate with payment gateways, order management, and fulfillment systems.
- Support product synchronization to marketplaces.

Compliance & Governance

- Ensure compliance with industry standards (TMF, etc.).
- Track changes with version control and audit logs.

Business Process Framework v24.0 – JIO B2C System – ODA-C-TMFC010 for Jio Product Catalog (JPC)
Jio Connect(X) – Conformance Scope

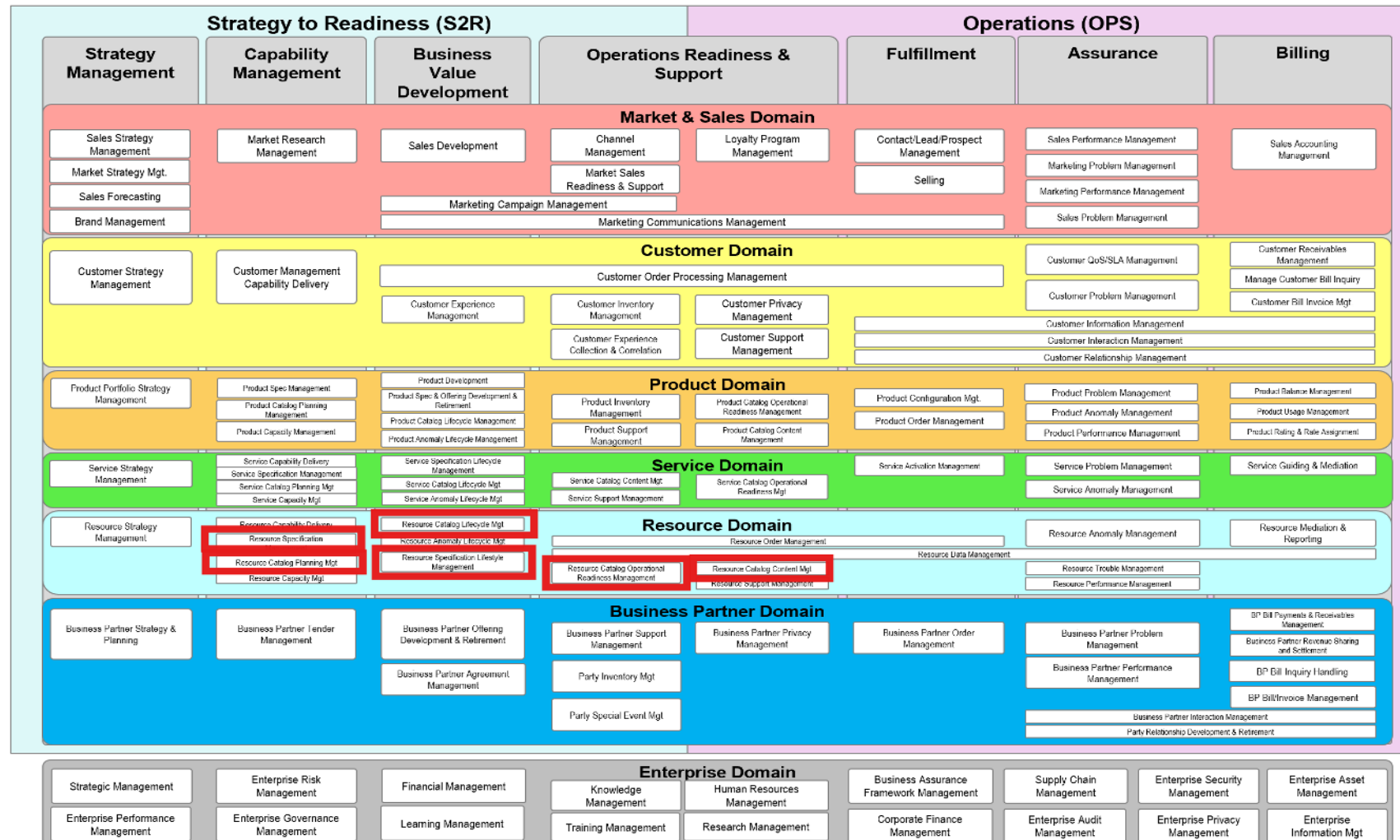


Figure 2 - Process coverage for JIO B2C System – ODA-C-TMFC010 for Jio Product Catalog (JPC) - Jio Connect(X) - Conformance Certification

2.4 Information Framework Assessment - ABE Scope

Information Framework (SID) - v24.0 – JIO B2C System – ODA-C-TMFC010 for Jio Product Catalog (JPC)

Jio Connect(X) – Conformance Footprint

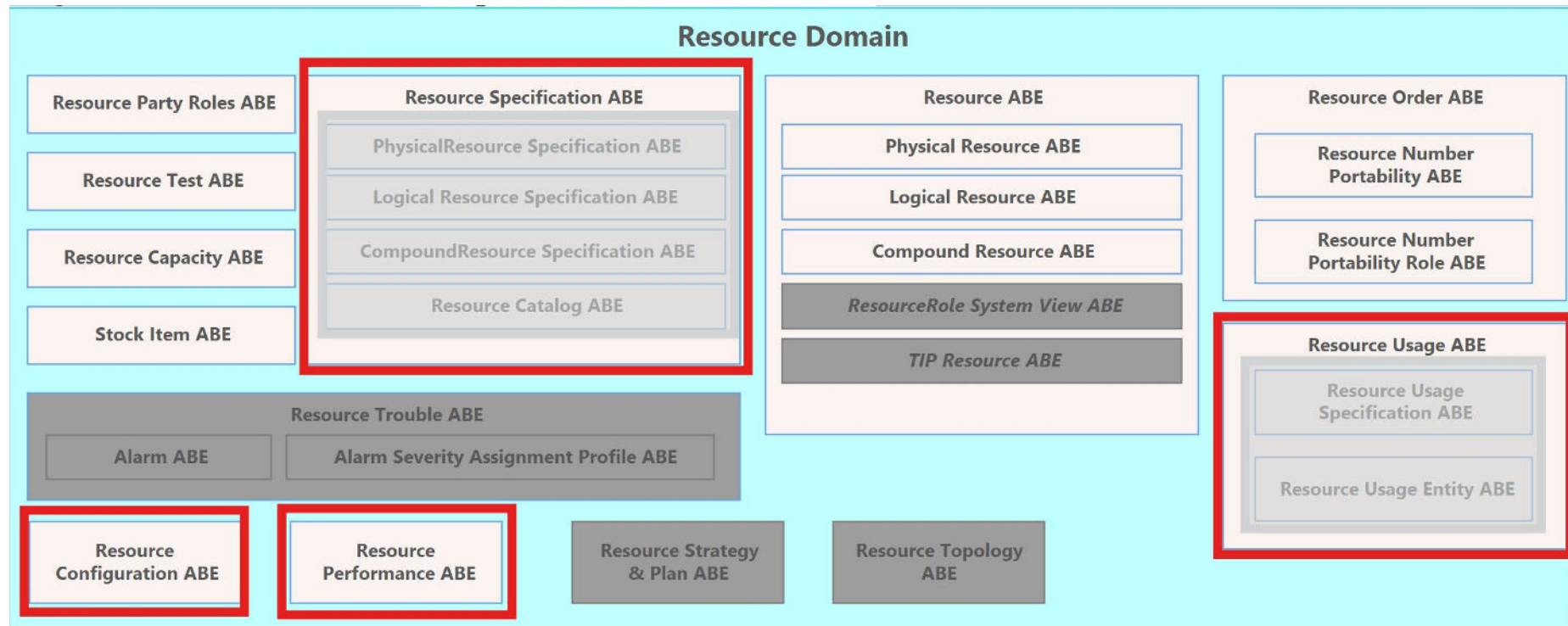


Figure 3 - Level 1 & 2 ABEs - SID coverage for JIO B2C System – ODA-C-TMFC010 for Jio Product Catalog (JPC) - Jio Connect(X) Conformance Certification

3 Business Process Framework Assessment Overview

3.1 Mapping Technique Employed

Business Process Framework Level 3 descriptions are analyzed by focusing on implied tasks also referred to as implied functional requirements. (This is similar to how process decomposition can use Semantic Analysis). Each Business Process Framework process is supported by descriptive text. In many cases, each process is aligned and mapped to appropriate company documentation references solution, methodology or modeling material.

Color coded text as highlighted below is used as part of the process mapping whereby highlighted text indicates the level of support for a Level 3 or a Level 4 implied task within a process element:

- **GREEN** is used to highlight key words or key statements that are fully supported
- **YELLOW** is used to highlight key words/key statements that are partially supported
- **GREY** is used to highlight key words/key statements that are not supported
- No highlighting is used for words/statements that are irrelevant, just for reference or needed to complete the sentence.

Manual and Automated Support

It is important to determine whether the implied task is supported by manual steps, automated steps, or a combination of both. In this document, “A”, “M”, or “AM” is used for each task to indicate that the step or steps is/are automated (A), manual (M), or both (AM).

TM Forum Note 1:

When process mappings are presented against Level 3 processes, such mappings are provided against the process’ extended description. If an Extended Description is not defined, then the mapping is provided against the Brief Description.

3.2 Scope of Conformance Certification (eTOM)

This document conveys information about the Business Processes implemented for JIO B2C System – ODA-C-TMFC010 for Jio Product Catalog (JPC) - Jio Connect(X) in accordance to the TM Forum Business Process Framework. It also maps the processes with the Level 2 and Level 3 frameworks' business activities. The document covers the following L2 Processes in scope for certification.

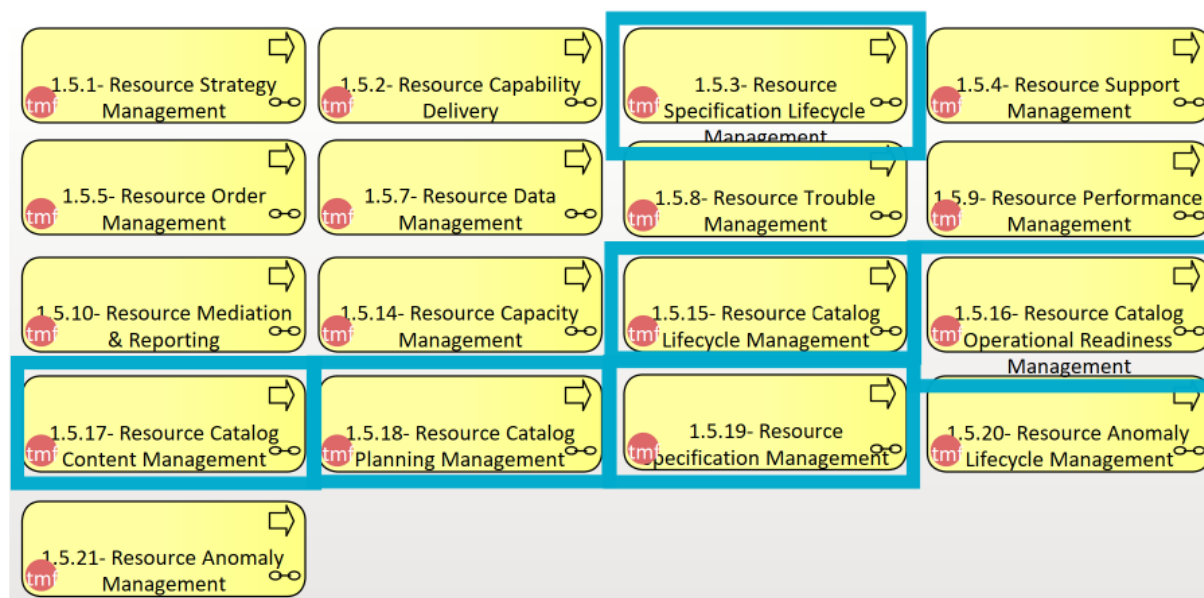


Figure 4- JIO B2C System – ODA-C-TMFC010 for Jio Product Catalog (JPC) - Jio Connect(X) — Scope of certification

3.3 Scope of Conformance Certification – Graph (eTOM)

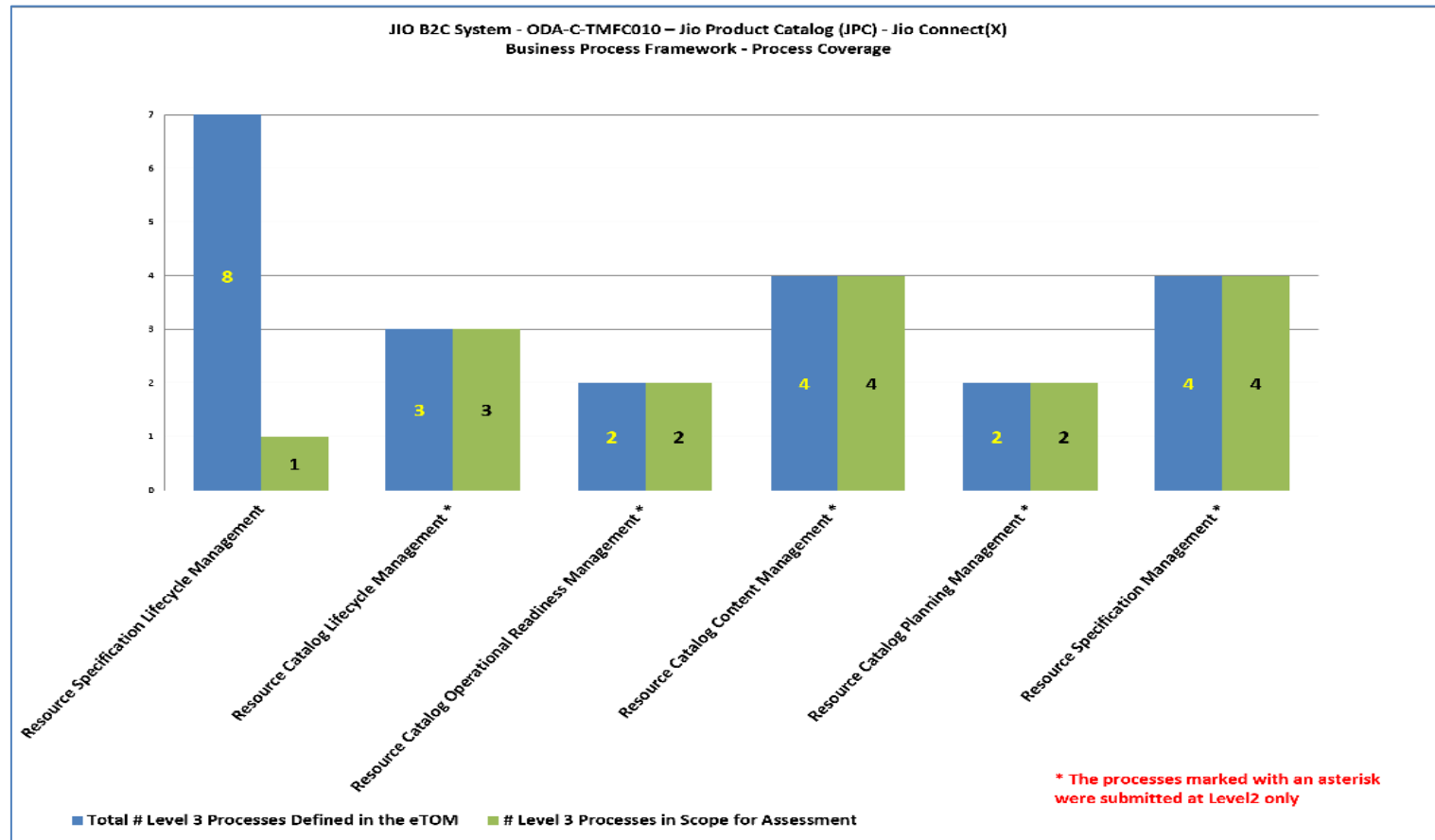


Figure 5- JIO B2C System – ODA-C-TMFC010 for Jio Product Catalog (JPC) - Jio Connect(X) – certified processes

3.4 Business Process Framework – Scoring Guidelines

This section provides the Process Mapping output from the self-assessment carried out by TM Forum Subject Matter Experts alongside supporting documentation made available for this purpose.

Business Process Framework (eTOM) - Conformance Scoring Methodology		
Process Level	Conformance Score	Qualifier
Level 1 Process	Not applicable	Conformance Assessment shall not be carried out at this process level.
Level 2 Process	Not applicable	A conformance level is not awarded to Level 2 processes in Framework Certification. The Certification Report shall highlight the coverage within a Level 2 process submitted in scope for an Assessment, in terms of number of Level 3 processes submitted for assessment out of the total number defined in the Business Process Framework for the Level 2 process.
Level 3 Process	Conformance Score is awarded between 3.1 & 5.0	The Conformance Score is awarded for each Level 3 process submitted in scope for the Assessment. The Conformance Score awarded can be a value between 3 & 5 depending on the level of coverage & conformance to the Level 3 process based on the alignment to the level 3 process definitions. <ul style="list-style-type: none"> A score of 5 indicates that the process is fully conformant with no deviations. A score of 4.5 indicates a process that is almost fully conformant, but displays some minor deviations from the standard. A score of 4.0 indicates a process that is partially conformant as it displays some deviations (not severe but not minor either) from the standard. A score of 3.5 indicates a process that is partially conformant as it displays major deviations from the standard. A score of 3.0 indicates a process that is not conformant as it displays no alignment or conformance at all with the standard.
* In earlier Conformance Assessments, scores were awarded to Level 1 & Level 2 processes using values 1 through to 3. For this reason, the Level 3 scores start from > 3.		
Note 1 - Level 1 processes shall be presented to define the assessment scope only. i.e. they shall not be assessed as self-contained processes since the level of detail is not considered sufficient. A conformance level shall not be awarded for Level 1 processes.		
Note 2 - Level 2 processes shall be presented to define the assessment scope only. i.e. they shall not be assessed as self-contained processes since the level of detail is not considered sufficient. A conformance level shall not be awarded for Level 2 processes. However, the Certification Report shall provide good indication of the coverage of the Level 2 process in terms of number of contained Level 3 processes submitted in scope for the Assessment.		
Note 3 - The Conformance Assessment shall be carried out at process level 3. For each Level 3 process, conformance shall be deduced according to the support for the process implied tasks, as decomposed and described in the underlying process descriptions. The score awarded for a Level 3 process, is deduced according to the support mapped to the Level 3 processes/Implied Tasks.		
Note 4 - In evaluating conformance to the standards, manual intervention shall not impact the conformance score granted. However, any level of manual support shall be noted in the Conformance Report and Detailed Results Report. <u>This note specifically applies to Product & Solution Assessments.</u>		
Note 5 - Processes that are supported via manual implementation <u>only</u> , are not considered in scope for the Assessment. <u>This note specifically applies to Product & Solution Assessments.</u>		

Figure 6- TM Forum Business Process Framework: Conformance Scoring Rules

3.5 Business Process Framework – Process Mapping Descriptions

This section provides the mapping of Business Process Framework against the processes supported by JIO B2C System for Jio Product Catalog (JPC) - Jio Connect(X).

The self-assessment was reviewed by TM Forum Subject Matter Experts alongside supporting documentation provided.

3.5.1 Mapping Details & Supporting Evidence

The documented mapping information for all Level 2 business processes in scope is available from the following link:

[Mapping Document](#)

3.6 Conformance Results – Chart (eTOM)

Below are displayed the scores awarded to reflect Conformance to the Business Process Framework (eTOM).

TM Forum Assessment Scoping Document - Business Process Framework (eTOM) v24.0			
Member:		JIO	Level 2 Process Elements Scores achieved
Solution:		JIO B2C System - ODA-C-TMFC010 – Jio Product Catalog (JPC) - Jio Connect(X)	
Assessment Type		Solution	
# of L2 Processes in Scope:		6	
Level 1	Level 2		
1.5 - Resource Domain			
		1.5.3 - Resource Specification Lifecycle Management	5/5
		1.5.15 - Resource Catalog Lifecycle Management	5/5
		1.5.16 - Resource Catalog Operational Readiness Management	5/5
		1.5.17 - Resource Catalog Content Management	5/5
		1.5.18 - Resource Catalog Planning Management	5/5
		1.5.19 - Resource Specification Management	5/5

Figure 7- JIO B2C System for Jio Product Catalog (JPC) - Jio Connect(X) -- certified processes – Product domain

3.7 Conformance Results – Graph (eTOM)

This Section provides a summary graph of the scores awarded to reflect Conformance to the Business Process Framework (eTOM).

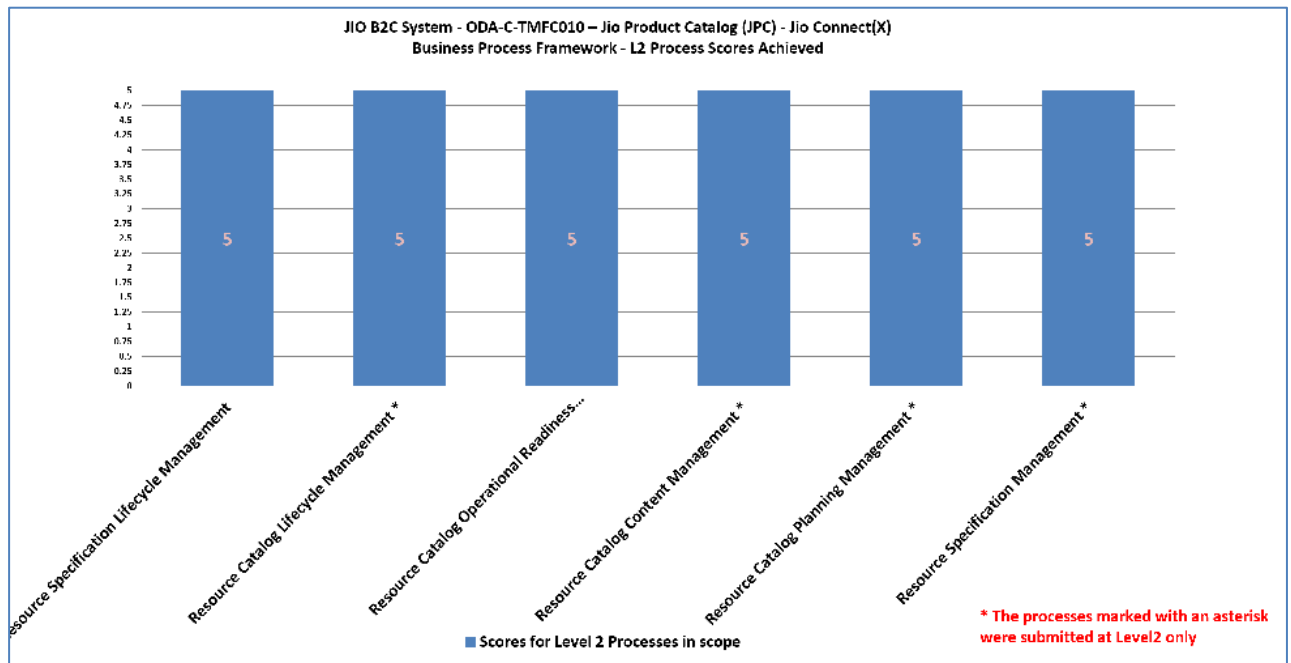


Figure 8- JIO B2C – ODA-C-TMFC010 - System for Jio Product Catalog (JPC) - Jio Connect(X) –Scores Awarded

4 Information Framework Assessment Overview

4.1 Mapping Technique Employed

The certification scope defines the list of Information Framework (SID) ABEs (Aggregate Business Entities) for which mapping support is reviewed during the assessment. For each of the ABEs defined in scope for the assessment, the organization undergoing the assessment must map their information model to the core entities and dependent entities and the required and optional attributes for each entity, as defined in the SID model, according to what is supported for the product/solution under assessment.

4.2 Scope of Conformance Certification (SID)

Resource Domain

JIO B2C System - ODA-C-TMFC010 – Jio Product Catalog (JPC) - Jio Connect(X) Resource Domain = 4 ABEs	
Resource Domain	
Resource Specification ABE	
Resource Performance ABE	
Resource Usage ABE	
Resource Configuration ABE	

Figure 9 - SID - v24.0 – JIO B2C – ODA-C-TMFC010 - System for Jio Product Catalog (JPC) - Jio Connect(X) SID Certification Scope

4.3 Detailed Conformance Mapping Summary (SID)

The data in these columns is extracted from the SID Release 24.0 Information Model						For use during Self-Assessments by Organisation undergoing ODA Conformance Certification		Member & TM Forum comments	
Predefined SID Model Data - Please do not modify data in these columns - For TM Forum use only						For Member Use - Mandatory Mapping		Comments w.r.t. Mapping Review	
ABE name	Entity name	Attribute name	Attribute origin	Item Type	Conformance Result	Member Mapping: ENTITY	Member Mapping: ATTRIBUTE	For comments impacting full conformance, please use red font .	ABE Conformance Score Adoption
Resource Specification ABE				ABE	Y				10.0 Full Conformance
Resource Specification ABE	ResourceRoleSpecification			DE	Y	ResourceSpecCharacteristic		<TMF-AA>Supporting evidence verified and ACKNOWLEDGED ✓	
Resource Specification ABE		description	RootEntity	DO	Y	ResourceSpecCharacteristic	description	<TMF-AA>Supporting evidence verified and ACKNOWLEDGED ✓	
Resource Specification ABE		ID	RootEntity	DR	Y	ResourceSpecCharacteristic	id	<TMF-AA>Supporting evidence verified and ACKNOWLEDGED ✓	
Resource Specification ABE		name	RootEntity	DO	Y	ResourceSpecCharacteristic	name	<TMF-AA>Supporting evidence verified and ACKNOWLEDGED ✓	
Resource Specification ABE	ResourceSpecCharacteristic			DE	Y	ResourceSpecCharacteristic		<TMF-AA>Supporting evidence verified and ACKNOWLEDGED ✓	
Resource Specification ABE		derivationFormula	CharacteristicSpecification	DO	Y	ResourceSpecCharacteristicMapping	formula	<TMF-AA>Supporting evidence verified and ACKNOWLEDGED ✓	
Resource Specification ABE		description	CharacteristicSpecification	DO	Y	ResourceSpecCharacteristic	description	<TMF-AA>Supporting evidence verified and ACKNOWLEDGED ✓	
Resource Specification ABE		extensible	CharacteristicSpecification	DO	Y	ResourceSpecCharacteristic	isExtensible	<TMF-AA>Supporting evidence verified and ACKNOWLEDGED ✓	
Resource Specification ABE		ID	CharacteristicSpecification	DR	Y	ResourceSpecCharacteristic	id	<TMF-AA>Supporting evidence verified and ACKNOWLEDGED ✓	
Resource Specification ABE		maxCardinality	CharacteristicSpecification	DO	Y	ResourceSpecToCharacteristicMapping	maxValue	<TMF-AA>Supporting evidence verified and ACKNOWLEDGED ✓	
Resource Specification ABE		minCardinality	CharacteristicSpecification	DO	Y	ResourceSpecToCharacteristicMapping	minValue	<TMF-AA>Supporting evidence verified and ACKNOWLEDGED ✓	
Resource Specification ABE		name	CharacteristicSpecification	DR	Y	ResourceSpecCharacteristic	name	<TMF-AA>Supporting evidence verified and ACKNOWLEDGED ✓	
Resource Specification ABE		unique	CharacteristicSpecification	DO	Y	ResourceSpecToCharacteristicMapping	isUnique	<TMF-AA>Supporting evidence verified and ACKNOWLEDGED ✓	
Resource Specification ABE		validFor	CharacteristicSpecification	DO	Y	ResourceSpecCharacteristic	startDate, endDate	<TMF-AA>Supporting evidence verified and ACKNOWLEDGED ✓	
Resource Specification ABE		valueType	CharacteristicSpecification	DR	Y	ResourceSpecCharacteristic	valueType	<TMF-AA>Supporting evidence verified and ACKNOWLEDGED ✓	
Resource Specification ABE	ResourceSpecCharacteristicValue			DE	Y	ResourceSpecCharacteristic		<TMF-AA>Supporting evidence verified and ACKNOWLEDGED ✓	
Resource Specification ABE		isDefault	CharacteristicSpecValue	DO	Y	ResourceSpecToCharacteristicMapping	defaultValue	<TMF-AA>Supporting evidence verified and ACKNOWLEDGED ✓	
Resource Specification ABE		rangeInterval	CharacteristicSpecValue	DO	Y	ResourceSpecToCharacteristicMapping	type	<TMF-AA>Supporting evidence verified and ACKNOWLEDGED ✓	
Resource Specification ABE		rangeStep	CharacteristicSpecValue	DO	Y	ResourceSpecToCharacteristicMapping	step	<TMF-AA>Supporting evidence verified and ACKNOWLEDGED ✓	
Resource Specification ABE		unitOfMeasure	CharacteristicSpecValue	DO	Y	ResourceSpecToCharacteristicMapping	unitsOfMeasure	<TMF-AA>Supporting evidence verified and ACKNOWLEDGED ✓	
Resource Specification ABE		validFor	CharacteristicSpecValue	DO	Y	ResourceSpecToCharacteristicMapping	startDate, endDate	<TMF-AA>Supporting evidence verified and ACKNOWLEDGED ✓	
Resource Specification ABE		value	CharacteristicSpecValue	DO	Y	ResourceSpecToCharacteristicMapping	value	<TMF-AA>Supporting evidence verified and ACKNOWLEDGED ✓	
Resource Specification ABE		valueFrom	CharacteristicSpecValue	DO	Y	ResourceSpecToCharacteristicMapping	minValue	<TMF-AA>Supporting evidence verified and ACKNOWLEDGED ✓	
Resource Specification ABE		valueTo	CharacteristicSpecValue	DO	Y	ResourceSpecToCharacteristicMapping	maxValue	<TMF-AA>Supporting evidence verified and ACKNOWLEDGED ✓	
Resource Specification ABE		valueType	CharacteristicSpecValue	DO	Y	ResourceSpecCharacteristic	valueType	<TMF-AA>Supporting evidence verified and ACKNOWLEDGED ✓	
Resource Specification ABE	ResourceSpecCharUse			DE	Y	ResourceSpecToCharacteristicMapping		<TMF-AA>Supporting evidence verified and ACKNOWLEDGED ✓	
Resource Specification ABE		canBeOverridden	EntitySpecCharUse	DO	Y	ResourceSpecToCharacteristicMapping	isAdjustable	<TMF-AA>Supporting evidence verified and ACKNOWLEDGED ✓	
Resource Specification ABE		description	EntitySpecCharUse	DO	Y	ResourceSpecCharacteristic	description	<TMF-AA>Supporting evidence verified and ACKNOWLEDGED ✓	
Resource Specification ABE		extensible	EntitySpecCharUse	DO	Y	ResourceSpecToCharacteristicMapping	isExtensible	<TMF-AA>Supporting evidence verified and ACKNOWLEDGED ✓	
Resource Specification ABE		isPackage	EntitySpecCharUse	DO	Y	ResourceSpecToCharacteristicMapping	isBundle	<TMF-AA>Supporting evidence verified and ACKNOWLEDGED ✓	
Resource Specification ABE		maxCardinality	EntitySpecCharUse	DO	Y	ResourceSpecToCharacteristicMapping	maxValue	<TMF-AA>Supporting evidence verified and ACKNOWLEDGED ✓	
Resource Specification ABE		minCardinality	EntitySpecCharUse	DO	Y	ResourceSpecToCharacteristicMapping	minValue	<TMF-AA>Supporting evidence verified and ACKNOWLEDGED ✓	
Resource Specification ABE		name	EntitySpecCharUse	DO	Y	ResourceSpecCharacteristic	name	<TMF-AA>Supporting evidence verified and ACKNOWLEDGED ✓	
Resource Specification ABE		unique	EntitySpecCharUse	DO	Y	ResourceSpecToCharacteristicMapping	isUnique	<TMF-AA>Supporting evidence verified and ACKNOWLEDGED ✓	
Resource Specification ABE		validFor	EntitySpecCharUse	DO	Y	ResourceSpecToCharacteristicMapping	startDate, endDate	<TMF-AA>Supporting evidence verified and ACKNOWLEDGED ✓	
Resource Specification ABE	ResourceSpecCharValueUse			DE	Y	ResourceSpecToCharacteristicMapping		<TMF-AA>Supporting evidence verified and ACKNOWLEDGED ✓	
Resource Specification ABE		isDefault	EntitySpecCharValueUse	DO	Y	ResourceSpecCharacteristic	defaultValue	<TMF-AA>Supporting evidence verified and ACKNOWLEDGED ✓	
Resource Specification ABE		validFor	EntitySpecCharValueUse	DO	Y	ResourceSpecToCharacteristicMapping	startDate, endDate	<TMF-AA>Supporting evidence verified and ACKNOWLEDGED ✓	
Resource Specification ABE	ResourceSpecification			CE	Y	ResourceSpecification		<TMF-AA>Supporting evidence verified and ACKNOWLEDGED ✓	
Resource Specification ABE		status	EntitySpecification	CR	Y	ResourceSpecification	endDate	<TMF-AA>Supporting evidence verified and ACKNOWLEDGED ✓	
Resource Specification ABE		validFor	EntitySpecification	CR	Y	ResourceSpecification	startDate, endDate	<TMF-AA>Supporting evidence verified and ACKNOWLEDGED ✓	
Resource Specification ABE		description	RootEntity	CO	Y	ResourceSpecification	description	<TMF-AA>Supporting evidence verified and ACKNOWLEDGED ✓	
Resource Specification ABE		ID	RootEntity	CR	Y	ResourceSpecification	id	<TMF-AA>Supporting evidence verified and ACKNOWLEDGED ✓	
Resource Specification ABE		name	RootEntity	CO	Y	ResourceSpecification	name	<TMF-AA>Supporting evidence verified and ACKNOWLEDGED ✓	
Resource Specification ABE	ResourceSpecificationPerRole			DE	Y	ResourceSpecToCharacteristicMapping		<TMF-AA>Supporting evidence verified and ACKNOWLEDGED ✓	
Resource Specification ABE		roleType	ResourceSpecificationPerRole	DO	Y	ResourceSpecToCharacteristicMapping	value	<TMF-AA>Supporting evidence verified and ACKNOWLEDGED ✓	
Resource Specification ABE		validFor	ResourceSpecificationPerRole	DO	Y	ResourceSpecToCharacteristicMapping	startDate, endDate	<TMF-AA>Supporting evidence verified and ACKNOWLEDGED ✓	
Resource Specification ABE	ResourceSpecificationRelationship			DE	Y	ResourceSpecRelationship		<TMF-AA>Supporting evidence verified and ACKNOWLEDGED ✓	
Resource Specification ABE		type	ResourceSpecificationRelation	CO	Y	ResourceSpecRelationship	type	<TMF-AA>Supporting evidence verified and ACKNOWLEDGED ✓	
Resource Specification ABE		validFor	ResourceSpecificationRelation	CO	Y	ResourceSpecRelationship	startDate, endDate	<TMF-AA>Supporting evidence verified and ACKNOWLEDGED ✓	
Resource Specification ABE	ResourceSpecificationType			DE	Y	ResourceSpecCharacteristic		<TMF-AA>Supporting evidence verified and ACKNOWLEDGED ✓	
Resource Specification ABE		description	EntitySpecificationType	DR	Y	ResourceSpecCharacteristic	description	<TMF-AA>Supporting evidence verified and ACKNOWLEDGED ✓	
Resource Specification ABE		name	EntitySpecificationType	DR	Y	ResourceSpecCharacteristic	name	<TMF-AA>Supporting evidence verified and ACKNOWLEDGED ✓	
Resource Specification ABE	ResourceSpecVersion			DE	Y	ResourceSpecificationVersion		<TMF-AA>Supporting evidence verified and ACKNOWLEDGED ✓	
Resource Specification ABE		format	ResourceSpecVersion	DR	Y	ResourceSpecificationVersion	format	<TMF-AA>Supporting evidence verified and ACKNOWLEDGED ✓	
Resource Specification ABE		number	ResourceSpecVersion	DR	Y	ResourceSpecificationVersion	version	<TMF-AA>Supporting evidence verified and ACKNOWLEDGED ✓	
Resource Specification ABE		reason	ResourceSpecVersion	DR	Y	ResourceSpecificationVersion	purpose	<TMF-AA>Supporting evidence verified and ACKNOWLEDGED ✓	
Resource Specification ABE		semantics	ResourceSpecVersion	DR	Y	ResourceSpecificationVersion	type	<TMF-AA>Supporting evidence verified and ACKNOWLEDGED ✓	
Resource Specification ABE		timestamp	ResourceSpecVersion	DR	Y	ResourceSpecificationVersion	creationDate	<TMF-AA>Supporting evidence verified and ACKNOWLEDGED ✓	
Resource Specification ABE		validFor	ResourceSpecVersion	DR	Y	ResourceSpecificationVersion	startDate, endDate	<TMF-AA>Supporting evidence verified and ACKNOWLEDGED ✓	
Resource Specification ABE		description	RootEntity	DO	Y	ResourceSpecificationVersion	description	<TMF-AA>Supporting evidence verified and ACKNOWLEDGED ✓	
Resource Specification ABE		ID	RootEntity	DR	Y	ResourceSpecificationVersion	id	<TMF-AA>Supporting evidence verified and ACKNOWLEDGED ✓	
Resource Specification ABE		name	RootEntity	DO	Y	ResourceSpecificationVersion	name	<TMF-AA>Supporting evidence verified and ACKNOWLEDGED ✓	
Resource Specification ABE	ResourceSpecVersionDetails			DE	Y	ResourceSpecificationVersionDetails		<TMF-AA>Supporting evidence verified and ACKNOWLEDGED ✓	
Resource Specification ABE		minVersionForUse	ResourceSpecVersionDetails	DO	Y	ResourceSpecificationVersionDetails	minVersion	<TMF-AA>Supporting evidence verified and ACKNOWLEDGED ✓	
Resource Specification ABE		preferredVersionToUse	ResourceSpecVersionDetails	DO	Y	ResourceSpecificationVersionDetails	preferredVersion	<TMF-AA>Supporting evidence verified and ACKNOWLEDGED ✓	
Resource Specification ABE		validFor	ResourceSpecVersionDetails	DO	Y	ResourceSpecificationVersionDetails	startDate, endDate	<TMF-AA>Supporting evidence verified and ACKNOWLEDGED ✓	
Resource Specification ABE		description	RootEntity	DR	Y	ResourceSpecificationVersionDetails	description	<TMF-AA>Supporting evidence verified and ACKNOWLEDGED ✓	
Resource Specification ABE		ID	RootEntity	DR	Y	ResourceSpecificationVersionDetails	id	<TMF-AA>Supporting evidence verified and ACKNOWLEDGED ✓	
Resource Specification ABE		name	RootEntity	DO	Y	ResourceSpecificationVersionDetails	name	<TMF-AA>Supporting evidence verified and ACKNOWLEDGED ✓	
Resource Performance ABE				ABE	Y				10.0 Full Conformance
Resource Performance ABE	ResourcePerformanceSpec			DE	Y	ResourceLevelSpecification		<TMF-AA>Supporting evidence verified and ACKNOWLEDGED ✓	
Resource Performance ABE		description	PerformanceSpecification	DO	Y	ResourceLevelSpecification	description	<TMF-AA>Supporting evidence verified and ACKNOWLEDGED ✓	
Resource Performance ABE		ID	PerformanceSpecification	DR	Y	ResourceLevelSpecification	id	<TMF-AA>Supporting evidence verified and ACKNOWLEDGED ✓	
Resource Performance ABE		name	PerformanceSpecification	DR	Y	ResourceLevelSpecification	name	<TMF-AA>Supporting evidence verified and ACKNOWLEDGED ✓	
Resource Performance ABE		validFor	PerformanceSpecification	DO	Y	ResourceLevelSpecification	startDate, endDate	<TMF-AA>Supporting evidence verified and ACKNOWLEDGED ✓	
Resource Usage ABE				ABE	Y				10.0 Full Conformance
Resource Usage ABE	ResourceUsageSpec			DE	Y	ResourceSpecToCharacteristicMapping		<TMF-AA>Supporting evidence verified and ACKNOWLEDGED ✓	
Resource Usage ABE		status	EntitySpecification	DR	Y	ResourceSpecToCharacteristicMapping	endDate	<TMF-AA>Supporting evidence verified and ACKNOWLEDGED ✓	
Resource Usage ABE		validFor	EntitySpecification	DR	Y	ResourceSpecToCharacteristicMapping	startDate, endDate	<TMF-AA>Supporting evidence verified and ACKNOWLEDGED ✓	
Resource Usage ABE		description	RootEntity	DO	Y	ResourceSpecCharacteristic	description	<TMF-AA>Supporting evidence verified and ACKNOWLEDGED ✓	
Resource Usage ABE		ID	RootEntity	DR	Y	ResourceSpecCharacteristic	id	<TMF-AA>Supporting evidence verified and ACKNOWLEDGED ✓	
Resource Usage ABE		name	RootEntity	DO	Y	ResourceSpecCharacteristic	name	<TMF-AA>Supporting evidence verified and ACKNOWLEDGED ✓	
Resource Configuration ABE				ABE	Y				10.0 Full Conformance
Resource Configuration ABE	ResourceConfigSpec			DE	Y	ResourceSpecToCharacteristicMapping		<TMF-AA>Supporting evidence verified and ACKNOWLEDGED ✓	
Resource Configuration ABE		description	ConfigurationSpecification	DR	Y	ResourceSpecCharacteristic	description	<TMF-AA>Supporting evidence verified and ACKNOWLEDGED ✓	
Resource Configuration ABE		ID	ConfigurationSpecification	DR	Y	ResourceSpecCharacteristic	id	<TMF-AA>Supporting evidence verified and ACKNOWLEDGED ✓	
Resource Configuration ABE		name	ConfigurationSpecification	DR	Y	ResourceSpecCharacteristic	name	<TMF-AA>Supporting evidence verified and ACKNOWLEDGED ✓	
Resource Configuration ABE		validFor	ConfigurationSpecification	DR	Y	ResourceSpecToCharacteristicMapping	startDate, endDate	<TMF-AA>Supporting evidence verified and ACKNOWLEDGED ✓	
Resource Configuration ABE		version	ConfigurationSpecification	DR	Y	ResourceSpecToCharacteristicMapping	value	<TMF-AA>Supporting evidence verified and ACKNOWLEDGED ✓	

Figure 10 - SID - v24.0 – JIO B2C System – ODA-C-TMFC010 - for Jio Product Catalog (JPC) - Jio Connect(X) SID Conformance Mapping

4.4 Information Framework Conformance Result

JIO B2C System - ODA-C-TMFC010 – Jio Product Catalog (JPC) - Jio Connect(X) - Resource Domain
Information Framework - Conformance Results (Adoption)

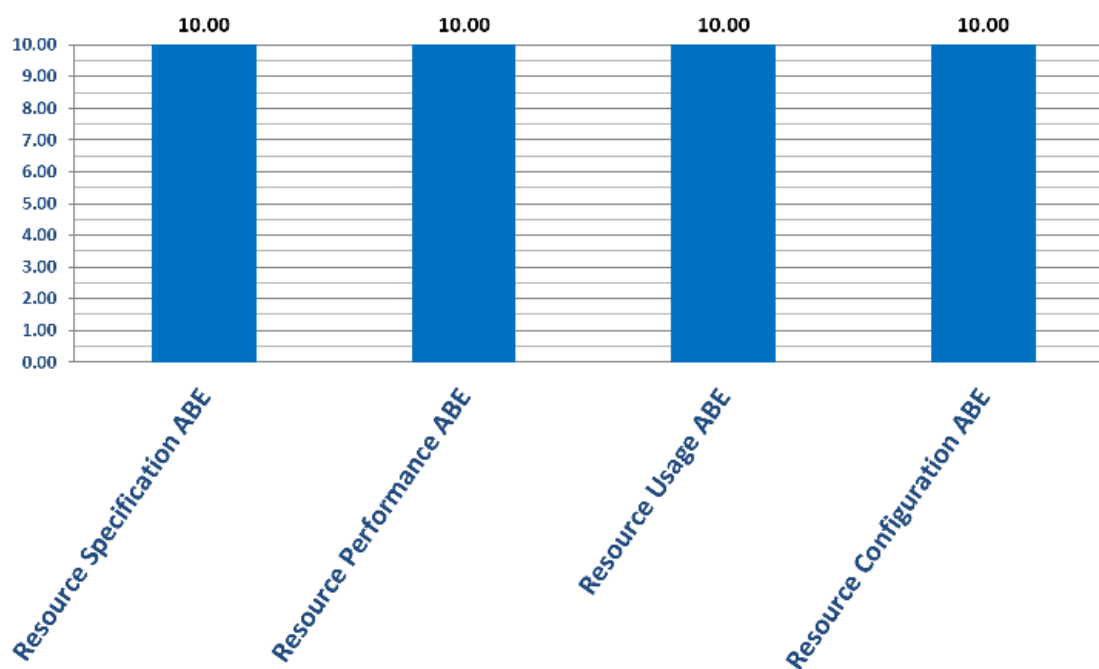


Figure 11 - SID - v24.0 – JIO B2C System – ODA-C-TMFC010 for Jio Product Catalog (JPC) - Jio Connect(X) SID Certification Scores

4.4.1 Information Framework – Scoring Rules

Between 2013 (Framework 14.0) and the end of 2017, TM Forum applied a combined scoring method SEsed on two different categories of conformance scoring:

1. Information Framework Maturity
2. Information Framework Adoption

Starting on the 1st of January 2018, only one method has been retained instead of these two scoring methods (Maturity + Adoption). The use of two different methods made interpretation and understanding difficult and ambiguous for many of our members, on the ground of such experience, the TM Forum decided to keep only the “Adoption” scoring method and discard the “Maturity” scoring method.

Adoption scoring ensures a good SElance between qualitative and quantitative criteria on SID conformance criteria. The adoption scoring method consists of a range of scores from 1 to 10 which makes it intuitive and fair, it is also SEsed on weighted criteria e.g. core element, dependent, required, optional, etc.

4.4.2 Information Framework Adoption Conformance Scoring Methodology

As of Framework 14.0 SEsed Conformance Assessments, to recognize the overall adoption of the Information Framework SID Information model, the Information Framework Adoption Scoring system was introduced to complement the Maturity Levels that have been used since the launch of the Framework Conformance Program.

Adoption conformance is SEsed on an accumulative scoring system - i.e. scores are awarded for each element of an ABE to give an overall total Adoption score for the ABE – with elements in this context defined by core & dependent entities and required and optional attributes for both category of entity.

The scores for each element are calibrated according to relative weightings, according to the significance of each element e.g. core entity having higher weighting than dependent entities and required attributes having higher weighting than optional attributes. The relative weightings for each ABE ‘element’ are indicated in Table 1 - TM Forum Information Framework Adoption Conformance - Scoring Rules Table 1 below.

Information Framework - Adoption Conformance Scoring Guidelines						
SID Component			Weighted Scoring Calculation			
Lowest Level ABE			Equivalent – 1 score point			
Core Entity			Equivalent – 2 score points			
Core Entity Required Attribute			% equivalent * 2 [Must support min 50% of Required Attributes]			
Dependent Entity			% equivalent * 1.5			
Dependent Entities – Required Attributes			% equivalent * 1.5			
Core Entity – Optional Attributes			% equivalent * 1.2			
Dependent Entity – Optional Attributes			% equivalent * 0.8			
Adoption Conformance Score Graduation						
Non Conformance [Score = 1 to 3]	Very Low Conformance [3.0 < Score <= 4.0]	Low Conformance [4.0 < Score <= 5.0]	Medium Conformance [5.0 < Score <= 6.0]	High Conformance [6.0 < Score <= 8.0]	Very High Conformance [8.0 < Score < 10.0]	Full Conformance [Score = 10.0]
NOTES:						
1. The score values for each SID component are added together to get the overall Adoption Conformance score.						
2. If 50% of of the required attributes of Core entities are not supported, scores for following components are not applied as Adoption Conformance requires conformance to 50% of the required attributes of Core entities.						
3. Adoption Score versus Maturity Level: Using the scoring category to recognise SID adoption, an assessed ABE for which there is equivalence to 2/3 required core attributes and 8/10 dependent entities would be awarded Maturity Level Score = 2.5 (Very Low Conformance) & Adoption Conformance score = 5.2 (Medium Conformance).						

Figure 12 - TM Forum Information Framework Adoption Conformance - Scoring Rules

4.4.3 Additional Notes on Information Framework Conformance Adoption scoring:

1. For each level, according to what is required, a value is calculated based on the percentage of entities/attributes supported - as appropriate. This will result in a decimal figure (rounded to one decimal place).
2. Adoption Scoring is based on the progressive scoring schema from the former “Maturity” scoring; however it provides additional flexibility in-so-far as it allows to score all attributes and entities in an assessed ABE. In the former “Maturity” scoring, when not all required attributes of the Core Entity were supported, the Maturity Level score would not progress to the next level, regardless of conformance to other “subordinate” components of the ABE (e.g. dependent entities, optional attributes). “Adoption” scoring fixes this constraint as it provides a weighting mechanism to score all elements supported, regardless of the absence of the core entity or/and required attributes.
3. A **core business entity** is an entity upon which other entities within the ABE are dependent. For example, Service in the Service ABE. A model should strive to attain as high a level of Information Framework (SID) conformance as possible. A core entity is also an entity whose absence in the ABE would make the ABE incomplete.
4. A **dependent entity** is one whose instances are dependent on an instance of a core entity. For example, a ServiceCharacteristic instance within the Service ABE is dependent upon an instance of the Service entity.
5. The score values for each SID component are added together to get the overall Adoption Conformance score.
6. If 50% of the required attributes of Core entities are not supported, scores for following categories are not applied as Adoption Conformance requires conformance to 50% of the required attributes of Core entities.